

MODEL	GÜÇ		VOLT	BORU GİRİŞ-ÇIKIŞ	MAX.DEBİ (L/min)	MAX. YÜKSEKLİĞİ (m)	MAX. EMİŞ (m)	AĞIRLIK (kg)
	(KW)	(HP)						
Pkm60	0.37	0.50	220 V	1"×1"	40	40	6	5.3
Pkm70	0.55	0.75	220 V	1"×1"	50	60	6	8.8
Pkm80	0.75	1.00	220 V	1"×1"	60	70	6	10.0

MODEL	GÜÇ		VOLT	BORU GİRİŞ-ÇIKIŞ	MAX.DEBİ (L/min)	MAX. YÜKSEKLİĞİ (m)	MAX. EMİŞ (m)	AĞIRLIK (kg)
	(KW)	(HP)						
ATM60	0.37	0.50	220 V	1"×1"	40	40	6	5.3
ATM70	0.55	0.75	220 V	1"×1"	50	60	6	8.8
ATM80	0.75	1.00	220 V	1"×1"	60	70	6	10.0
PK60AT	0.37	0.50	380 V	1"×1"	40	40	6	5.3
PK80AT	0.75	1.00	380 V	1"×1"	60	70	6	10.0
PKM110AT	1.1	1.5	220 V	1"×1"	90	90	6	14.8

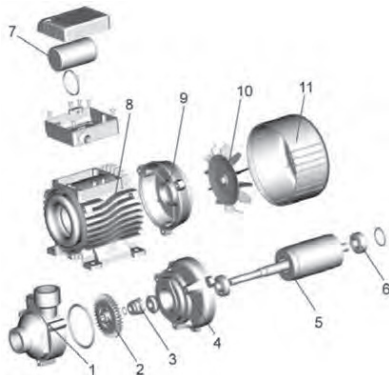
MODEL	GÜÇ		VOLT	BORU GİRİŞ-ÇIKIŞ	MAX.DEBİ (L/min)	MAX. YÜKSEKLİĞİ (m)	MAX. EMİŞ (m)	AĞIRLIK (kg)
	(KW)	(HP)						
EKM-60	0.37	0.50	220 V	1"×1"	40	34	6	5.3

POMPA

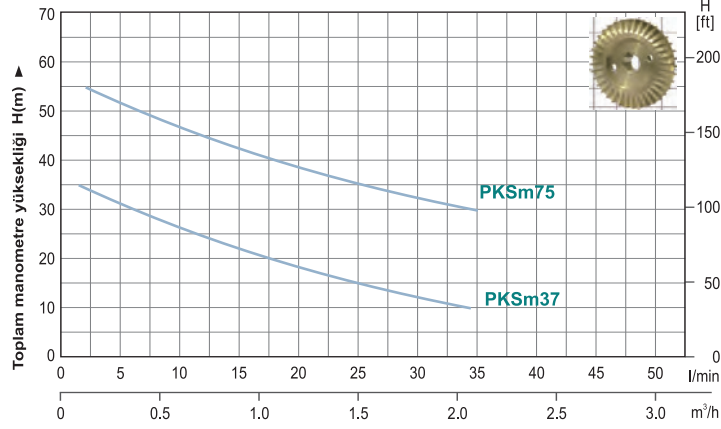
- Dökme demir gövde, özel pas önleyici uygulamalarla desteklenmiştir.
- Bronz Fan
- AISI304 Mil
- Maksimum sıvı sıcaklığı: +60 °C
- Maksimum emme yük.: 6 m.
- **Temiz Su**

MOTOR

- Monofaze / Trifaze 50hz
- İzolasyon Sınıfı : 130
- Koruma Sınıfı : IP44
- Dış Ortam Sıcaklığı : 40°C
- Termal aşırı yük koruması (M)
- **Bakır Sarma Bobin**



Part	Material	Remark
1 Pump body	Cast iron	Electrophoretic treatment, ABS
2 Impeller	Brass	
3 Mechanical seal	Silicon carbide/Graphite	
4 Support	Cast iron	Electrophoretic treatment, ABS
5 Rotor	Cold-rolled sheet	Welded stainless steel shaft
6 Bearing	High quality	
7 Capacitor	High quality	
8 Stator	Aluminum casting	Cold-rolled sheet stator
9 End plate	Aluminum	
10 Fan	Noryl	
11 Fan cover	Noryl	



MODEL	GÜÇ		VOLT	BORU GİRİŞ-ÇIKIŞ	MAX.DEBİ (L/min)	MAX. YÜKSEKLİĞİ (m)	MAX. EMİŞ (m)	AĞIRLIK (kg)
	(KW)	(HP)						
PKSm37	0.37	0.50	220 V	1"×1"	40	40	6	5.3
PKSm75	0.75	1.00	220 V	1"×1"	60	70	6	10.0

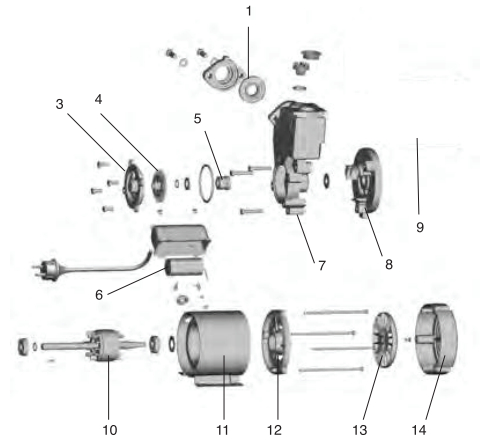
POMPA

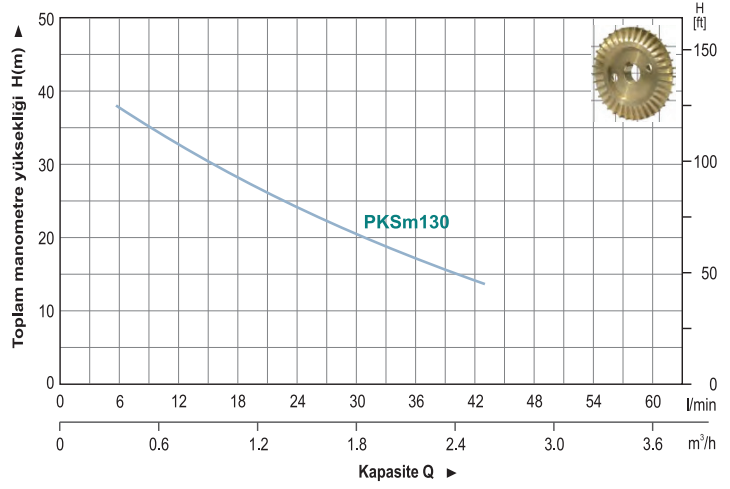
- Dökme demir gövde, özel pas önleyici uygulamalarla desteklenmiştir.
- Bronz Fan
- AISI304 Mil
- Maksimum sıvı sıcaklığı: +60 °C
- Maksimum emme yük.: 6 m.
- **Temiz Su**

MOTOR

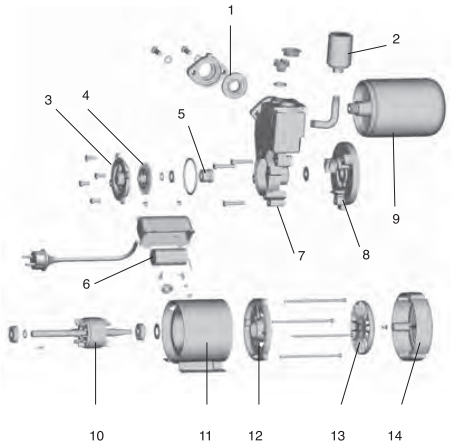
- Monofaze / Trifaze 50hz
- İzolasyon Sınıfı : I30
- Koruma Sınıfı : IP44
- Dış Ortam Sıcaklığı : 40°C
- Termal aşırı yük koruması (M)
- **Bakır Sarma Bobin**

Part	Material	Remark
1	Non-return valve	NBR
2	Pressure switch	High quality
3	Pump cover	Brass
4	Impeller	Brass
5	Mecanical seal	Silicon carbide
6	Capacitor	High quality
7	Pump body	Cast iron
8	Front cover	Cast iron
9	Tank	Iron
10	Rotor	Cold-rolled sheet
11	Stator	Aluminum casting
12	End plate	Aluminum
13	Fan	Noryl
14	Fan cover	Noryl





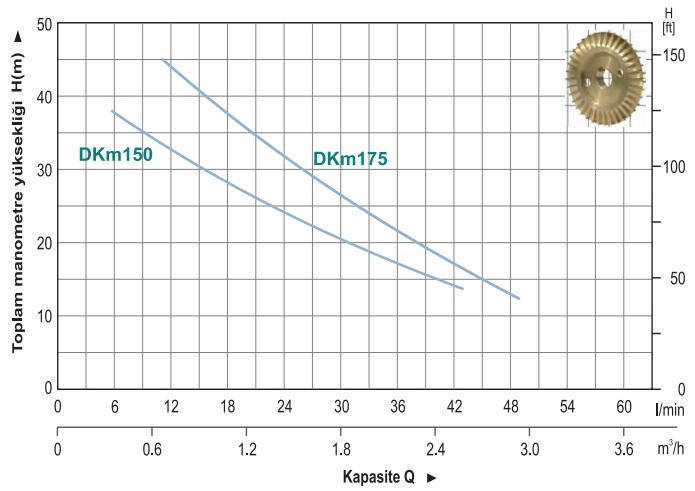
MODEL	GÜÇ		VOLT	BORU GİRİŞ-ÇIKIŞ	MAX.DEBİ (L/min)	MAX. YÜKSEKLİĞİ (m)	MAX. EMİŞ (m)	AĞIRLIK (kg)
	(KW)	(HP)						
PKSm130	0.125	0.17	220 V	1"×1"	40	38	9	7.5



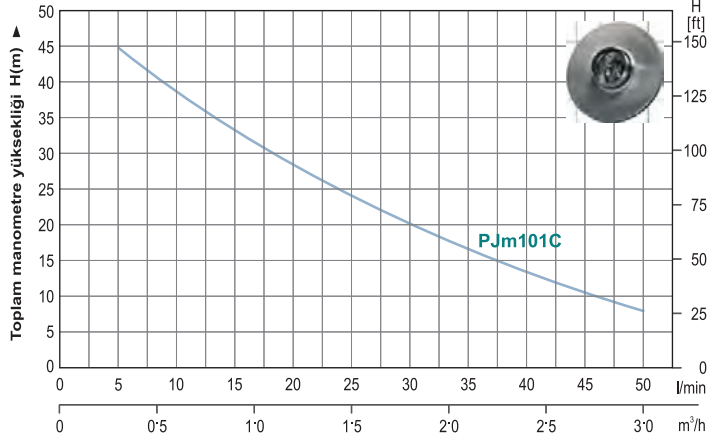
Part	Material	Remark
1	Non-return valve	NBR
2	Pressure switch	High quality
3	Pump cover	Brass
4	Impeller	Brass
5	Mecanical seal	Silicon carbide
6	Capacitor	High quality
7	Pump body	Cast iron
8	Front cover	Cast iron
9	Tank	Iron
10	Rotor	Cold-rolled sheet
11	Stator	Aluminum casting
12	End plate	Aluminum
13	Fan	Noryl
14	Fan cover	Noryl



- Smart
- Çok Sessiz
- Susuz Kalmaya Karşı Koruma
- Re-Start
- %40 Enerji Tasarrufu



MODEL	GÜÇ		VOLT	BORU GİRİŞ-ÇIKIŞ	MAX.DEBİ (L/min)	MAX. YÜKSEKLİĞİ (m)	MAX. EMİŞ (m)	AĞIRLIK (kg)
	(KW)	(HP)						
DKm150	0.37	0.50	220 V	1"×1"	40	38	9	7.5
DKm175	0.55	0.75	220 V	1"×1"	50	60	9	8.8



MODEL	GÜÇ		VOLT	BORU GİRİŞ-ÇIKIŞ	MAX.DEBİ (L/min)	MAX. YÜKSEKLİĞİ (m)	MAX. EMİŞ (m)	AĞIRLIK (kg)
	(KW)	(HP)						
PjM101C	0.75	1.0	220 V	1"×1"	60	50	9	10.1

POMPA

- Max.Sıvı Sıcaklığı 60 °C
- Paslanmaz Mil
- Paslanmaz Fan
- Yüksek İrtifa
- Temiz Su

MOTOR

- Monofaze 50hz
- İzolasyon Sınıfı : 130
- Koruma Sınıfı : IP44
- Dış Ortam Sıcaklığı : 40°C
- Termal aşırı yük koruması (M)
- Bakır Sarma Bobin

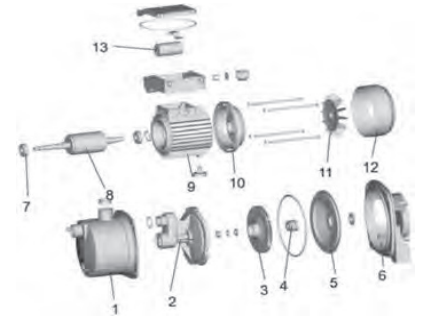
TEMİZ SU

48 m.

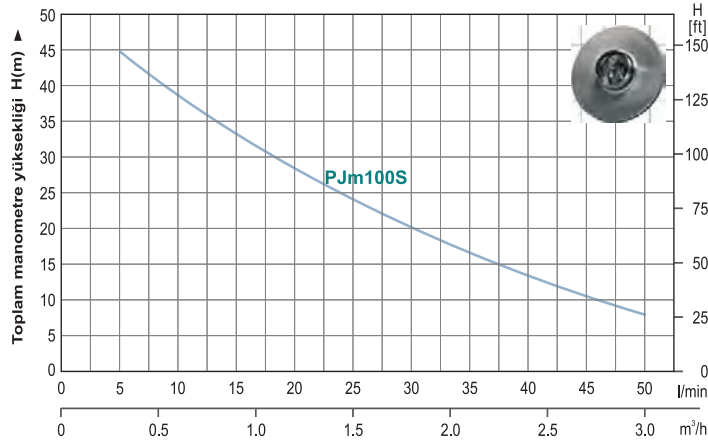
3-5 m³/h

Hidrofor Sis.

Part	Material	Remark
1	Pump body	
2	Diffuser	Noryl
3	Impeller	Noryl/Stainless steel/Brass
4	Mechanical seal	Silicon carbide/Graphite
5	Bracket cover	Stainless steel
6	Support	Aluminum
7	Bearing	High quality
8	Rotor	Cold-rolled sheet
9	Stator	Cold-rolled sheet stator
10	End plate	
11	Fan	
12	Fan cover	
13	Capacitor	High quality



ARITMA SİSTEMLERİ İÇİN UYGUNDUR.



MODEL	GÜÇ		VOLT	BORU GİRİŞ-ÇIKIŞ	MAX.DEBİ (L/min)	MAX. YÜKSEKLİĞİ (m)	MAX. EMİŞ (m)	AĞIRLIK (kg)
	(KW)	(HP)						
PjM100S	0.75	1.0	220 V	1"×1"	60	50	9	10.1

- AISI304 paslanmaz çelik