

MODEL	GÜÇ		VOLT	BORU GİRİŞ-ÇIKIŞ	MAX.DEBİ (L/min)	MAX. YÜKSEKLİĞİ (m)	MAX. EMİŞ (m)	AĞIRLIK (kg)
	(KW)	(HP)						
PCHm4-60	1.1	1.5	220 V	1"×1"	100	60	6	14,8
PCHm4-70	1.5	2.0	220 V	1"×1"	160	70	6	19,9

Sıvı Sıcaklığı: -10 'C / +85 'C

Ortam Sıcaklığı: 40 'C

AISI 304

### TEMİZ SU

58-70m.

6-10 m³/h

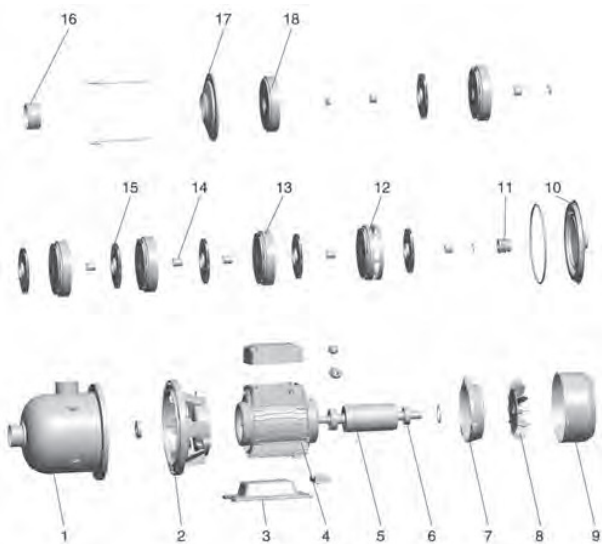
Hidrofor Sis.

### UYGULAMALAR

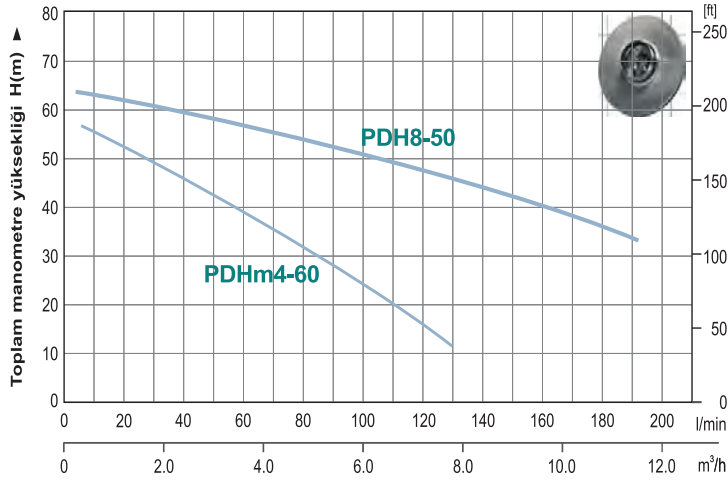
- Su basınçlandırma
- Su sirkülasyon sistemleri
- Zirai sulama
- Diğer alanlar

### MOTOR & POMPA

- TEFC motor, 2-kutuplu
- Koruma sınıfı: IP44
- Yalıtım sınıfı: F
- AISI 304 Fan ve Difüzör
- AISI 304 Mil
- Max. Emiş: 9m



No.	Part	Material
1	Pump body	AISI 304
3	Bottom plate	Cast iron
5	Rotor	
7	End plate	ZL102
9	Fan cover	08F
11	Mechanical seal	Carbon/ceramic
13	Difuser 2	AISI 304
15	Impeller	AISI 304
17	Pressure plate	AISI 304



MODEL	GÜÇ		VOLT	BORU GİRİŞ-ÇIKIŞ	MAX.DEBİ (L/min)	MAX. YÜKSEKLİĞİ (m)	MAX. EMİŞ (m)	AĞIRLIK (kg)
	(KW)	(HP)						
PDHm4-60	1.1	1.5	220 V	1-1/4" X 1"	117	60	9	15.4
PDH4-60	1.1	1.5	380 V	1-1/4" X 1"	117	60	9	15.4
PDH8-50	2.2	3.0	380 V	1-1/2" X 1-1/2"	220	66	9	20.7

Sıvı Sıcaklığı: -10 °C / +85 °C ●  
Ortam Sıcaklığı: 40 °C ●  
AISI 304 ●

## UYGULAMALAR

- Su basınçlandırma
- Su sirkülasyon sistemleri
- Zirai sulama
- Diğer alanlar

## MOTOR & POMPA

- TEFC motor, 2-kutuplu
- Koruma sınıfı: IP44
- Yalıtım sınıfı: F
- AISI 304 Fan ve Difüzör
- AISI 304 Mil
- Max. Emiş: 9m

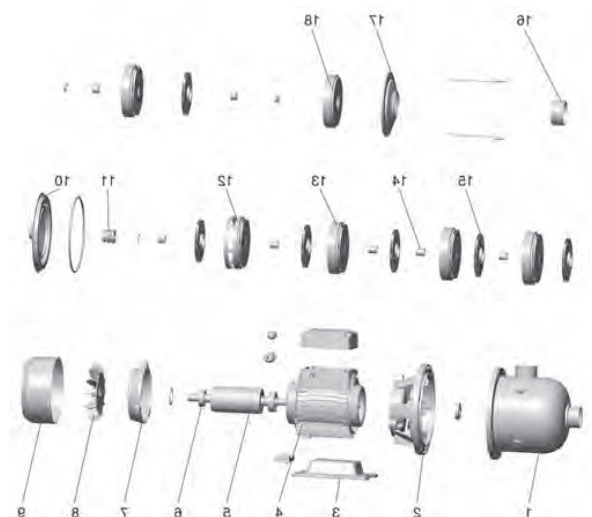
TEMİZ SU

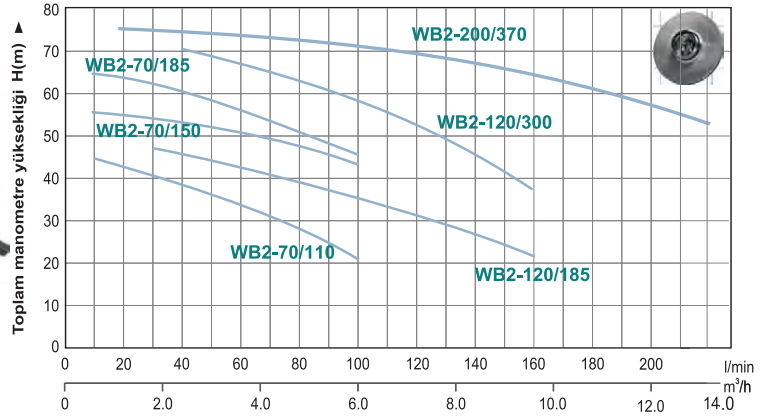
58-68m.

8-15 m3/h

Hidrofor Sis.

No.	Part	Material
1	Pump body	AISI 304
3	Bottom plate	Cast iron
5	Rotor	
7	End plate	ZL102
9	Fan cover	08F
11	Mechanical seal	Carbon/ceramic
13	Difuser 2	AISI 304
15	Impeller	AISI 304
17	Pressure plate	AISI 304





MODEL		GÜÇ		GİRİŞ ÇIKIŞ	Q	KAPASİTE								AĞIRLIK			
1~ 220V/240V	3~ 380V/415V	KW	HP			m³/h	n ≈ 2850 1/min								12	14	16
WB2-70/110D	WB2-70/110	1.1	1.5	1-1/4" x 1"	H(m)	20	40	60	80	100	120	140	160				
WB2-70/150D	WB2-70/150	1.5	2.0			44	42	40	37	33							
WB2-70/185D	WB2-70/185	1.85	2.5			54	52	50	47	43							
WB2-120/185D	WB2-120/220	1.85	2.5			61	58	56	52	48							
	WB2-120/300	3.0	4.0				50	48	46	44	41	38	34				
	WB2-200/300						65	63	61	58	55	52	48				
	WB2-200/370	3.7	5.0														
									71.5	70.1	69	67	65.5	64	59	54	50

Sıvı Sıcaklığı : -10 °C / +85 °C  
Ortam Sıcaklığı : 40 °C  
AISI 304

### UYGULAMALAR

- diğer sıvıların basınçlanması ve pompalanması
- Su sirkülasyon sistemleri
- Hidrofor sistemleri
- Zirai sulama
- Diğer alanlar

### ÇALIŞMA KOŞULLARI

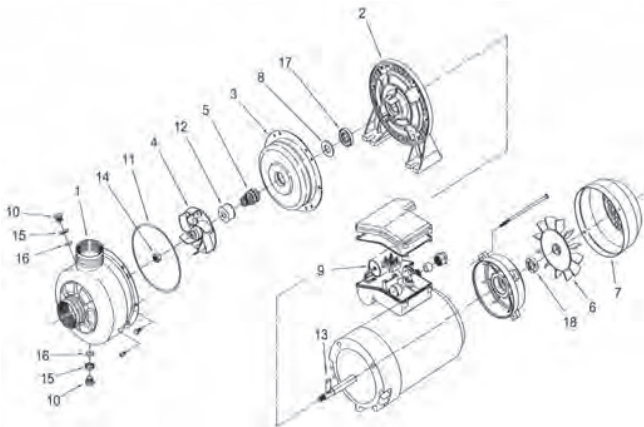
- Sıvı sıcaklığı -10 °C ~ + 110 °C
- Ortam sıcaklığı 40 °C'ye kadar
- Yükseklik: 1000 m'ye kadar
- Maksimum çalışma basıncı: 8 bar

TEMİZ SU

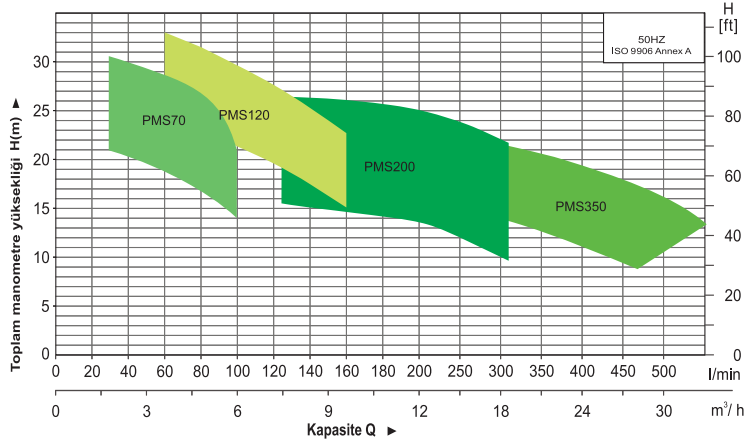
52-75m.

6-20 m³/h

Hidrofor Sis.



No.	Part	Material
1	Casing	316 Stainless Steel
2	Motor bracket	Aluminum
3	Casing cover	316 Stainless Steel
4	Impeller	316 Stainless Steel
5	Mechanical seal	Carbon/Ceramic/NBR
6	Fan	Polypropylene
7	Fan cover	Steel
8	Casing Ring	
9	Capacitor	Single phase only
10	Priming plug/Drain plug	303 Stainless Steel
11	O-ring	NBR
12	Splash ring	316 Stainless Steel
13	Key	316 Stainless Steel
14	Impeller nut	316 Stainless Steel
15	Washer	316 Stainless Steel
16	O-ring	NBR
17	Lip seal (Pump side)	-
18	Lip seal (Fan side)	-



MODEL	GÜÇ		VOLT	BORU GİRİŞ-ÇIKIŞ	MAX. DEBİ (L/min)	MAX. YÜKSEKLİĞİ (m)	MAX. EMİŞ (m)	AĞIRLIK (kg)
	(KW)	(HP)						
PMS70/0.55	0.55	0.75	380 V	1-1/4" X 1"	100	30	6	10.7
PMS120/0.9	0.90	1.2	380 V	1-1/4" X 1"	175	32	6	14.8
PMS200/1.85	1.85	2.4	380 V	2" X 1-1/4"	300	42	6	20.7
PMS370/2.2T	2.20	3.0	380 V	2" X 2"	580	24	6	20.7

- Sıvı Sıcaklığı : -10 °C / +85 °C
- Ortam Sıcaklığı : 40 °C
- AISI 304

## UYGULAMA

- Su temizleme
- Su sirkülasyon sistemleri
- Zirai sulama
- Diğer alanlar

## ÖZELLİKLER

- Kompakt yapı & koaksiyel kurulum. Pompa motora direkt olarak bağlantılıdır.
- Kolay kurulum, dişli giriş ve çıkış noktaları
- Ana parçalar ve bileşenlerde ağırlıkça hafif, ince basınçlı plaka yapısı
- Korozyona karşı dirençli, pompalanan sıvıyla temas halindeki bileşenler AISI304 paslanmaz çelikten imal

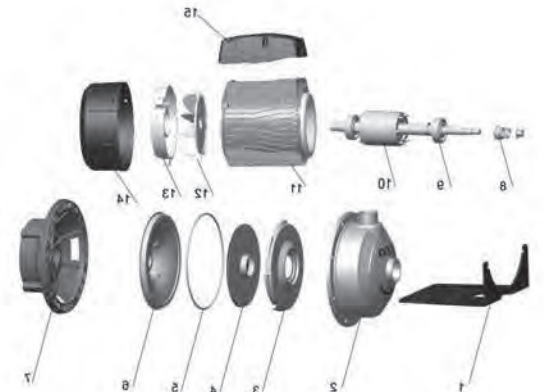
TEMİZ SU

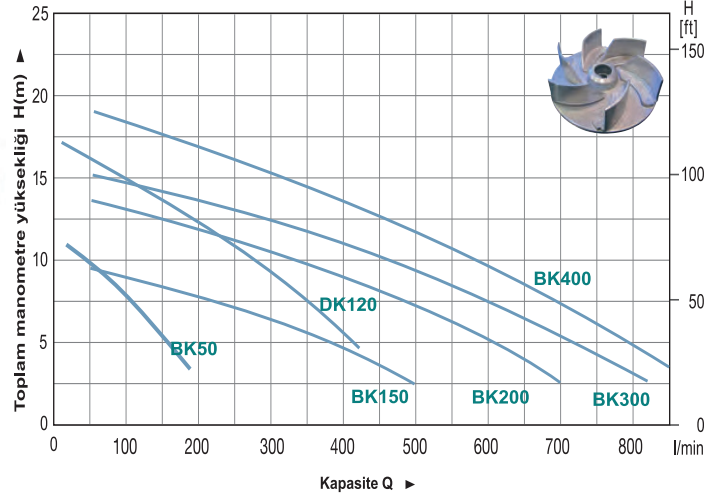
25-35m.

9-15 m<sup>3</sup>/h

Makine Sis.

Pos.	Part
1	Brace soleplate
2	Pump casing
3	Diffuser
4	Impeller
5	"O" ring
6	Airproof plate
7	Support
8	Mechanical seal
9	Ball bearing
10	Rotor
11	Stator
12	Fan
13	Rear housing
14	Fan cover
15	Terminal box





MODEL		GÜÇ		BORU GİRİŞ-ÇIKIŞ	Q	KAPASİTE										AĞIRLIK (kg)
1~220V/240V	3~380V/415V	KW	HP			n ≈ 2850 1/min										
						m³/h	6	12	18	24	33	42	48	57	66	H(m)
						l/min	100	200	300	400	500	700	800	950	1100	
	<b>BK50</b>	0.37	0.5	1-1/4" X 1"		7.0	3.0									9.0
<b>BK150D</b>	<b>BK150</b>	1.1	1.5	2" X 2"		9.5	8.8	7.8	6.7	5.0						15.0
<b>BK200D</b>	<b>BK200</b>	1.5	2.0	2" X 2"		12.7	12.0	11.2	10.0	8.3	6.5					16.0
	<b>BK300</b>	2.2	3.0	2-1/2" X 2"		15.0	14.0	13.5	12.7	11.2	9.8	8.9	7.5			22.0
	<b>BK400</b>	3.0	4.0	2-1/2" X 2"		17.5	16.8	16.0	15.2	14.0	12.5	11.5	9.7	7.5		24.0

MODEL		GÜÇ		BORU GİRİŞ-ÇIKIŞ	Q	KAPASİTE										AĞIRLIK (kg)
1~220V/240V	3~380V/415V	KW	HP			n ≈ 2850 1/min										
						m³/h	6	12	18	24	33	42	48	57	66	H(m)
						l/min	100	200	300	400	500	700	800	950	1100	
<b>DK120D</b>		0.85	1.2	1-1/2" X 1-1/2"		16	14	10	6							15.0
<b>DK120T</b>		0.85	1.2	1-1/2" X 1-1/2"		16	14	10	6							15.0

### KAPALI FANLI

TEMİZ SU

7-18m.

12-50 m³/h

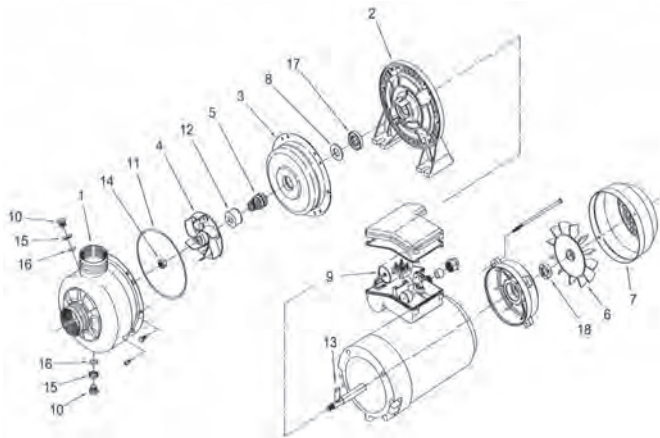
Makine Sis.

### UYGULAMALAR

- Su temizleme
- Katı parçacıklar bulunan endüstriyel tesisler
- Salamura ve süt tesisleri
- Sebze, meyve, balık tesisleri

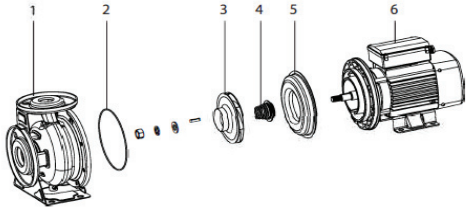
### ÇALIŞMA KOŞULLARI

- Sıvı sıcaklığı -10 °C ~ +110 °C
- Ortam sıcaklığı 40 °C'ye kadar
- Yükseklik: 20 m'ye kadar
- **Maksimum parçacık çapı: 20 mm**
- **Açık fan**
- **AISI 304**



No.	Part	Material
1	Casing	316 Stainless Steel
2	Motor bracket	Aluminum
3	Casing cover	316 Stainless Steel
4	Impeller	316 Stainless Steel
5	Mechanical seal	Carbon/Ceramic/NBR
6	Fan	Polypropylene
7	Fan cover	Steel
8	Casing Ring	
9	Capacitor	Single phase only
10	Priming plug/Drain plug	303 Stainless Steel
11	O-ring	NBR
12	Splash ring	316 Stainless Steel
13	Key	316 Stainless Steel
14	Impeller nut	316 Stainless Steel
15	Washer	316 Stainless Steel
16	O-ring	NBR
17	Lip seal (Pump side)	-
18	Lip seal (Fan side)	-

No.	Description	No.	Description
1	Pump housing component	4	Mechanical seal
2	O-ring	5	Pump cover
3	Impeller	6	Motor



FİYAT İSTEYİNİZ

Model	Power (kW)	Q.rated (m³/h)	H.rated (m)	Q (m³/h)	3	6	9	12.5	15	18	20	22	Fiyat (USD)
FSE50-32-160/2.2(T)	2.2	12.5	26	H(m)	30.5	29.5	27.5	26	24	22.5	20.5	18	
FSE50-32-200/3.0T	3.0	12.5	34		38	37	35	34	32	30	28	26	
FSE50-32-200/4.0T	4.0	12.5	45		51.5	50	48	45	43	41	39	30	
FSE50-32-200/5.5T	5.5	12.5	54		62	60	58	54	52	47	42	37	

Model	Power (kW)	Q.rated (m³/h)	H.rated (m)	Q (m³/h)	5	10	15	20	25	30	35	40	Fiyat (USD)
FSE65-40-125/1.5(T)	1.5	25	13	H(m)	20	19	17.5	16	13	10.5			
FSE65-40-125/2.2(T)	2.2	25	20		27	26	24	22	20	17	14		
FSE65-40-125/3.0T	3.0	25	25		31	30	29	27	25	22	18		
FSE65-40-160/4.0T	4.0	25	31		39	38	36.5	34	31	28	24	19	
FSE65-40-200/5.5T	5.5	25	41		47	46	45.5	44	41	38	34	30	
FSE65-40-200/7.5T	7.5	25	48		52	51.5	51	50	48	45	42	38	
FSE65-40-200/11T	11	25	68		69	69	68.5	68	68	66	64	60	

Model	Power (kW)	Q.rated (m³/h)	H.rated (m)	Q (m³/h)	5	10	20	30	40	50	60	70	Fiyat (USD)
FSE65-50-125/3.0T	3.0	40	16	H(m)	27	26	23	20	16	10			
FSE65-50-125/4.0T	4.0	40	21		28	27	26	24	21	16			
FSE65-50-160/5.5T	5.5	50	24		34.5	34.5	34	31.5	28.5	24	20		
FSE65-50-200/7.5T	7.5	50	32		41	41	40.5	39	36	32	27.5		
FSE65-50-200/9.2T	9.2	50	41		52	52	51	49	45	41	37		
FSE65-50-200/11T	11	50	48		57	56	55	53	51	48	42	30	
FSE65-50-200/15T	15	50	62		69	68	67	65	64	62	57	50	
FSE65-50-200/18.5T	18.5	50	68		73	72	71	70	69	68	65	59	

Model	Power (kW)	Q.rated (m³/h)	H.rated (m)	Q (m³/h)	40	50	60	70	80	90	100	110	120	130	Fiyat (USD)
FSE80-65-125/4.0T	4.0	80	13	H(m)	19	18	17	15	13	11	9				
FSE80-65-125/5.5T	5.5	100	15		22	21	20	19	18	17	15	13	10		
FSE80-65-125/7.5T	7.5	100	20		27	26	25	24	23	22	20	18	15		
FSE80-65-125/9.2T	9.2	100	25		30	29	29	28	27	26	25	23	22	19	
FSE80-65-160/11T	11	100	29		36	35	34	33	32	31	29	27	25	22	
FSE80-65-160/15T	15	100	37		44	43	42	40	38	38	37	36	34	32	
FSE80-65-200/18.5T	18.5	100	47		53	52	51	50	49	48	47	45	44	41	
FSE80-65-200/22T	22	100	54		60	59	58	57	56	55	54	53	51	49	
FSE80-65-200/30T	30	100	67		72	72	71	70	69	68	67	66	65	63	

Model	Power (kW)	Q.rated (m³/h)	H.rated (m)	Q (m³/h)	60	80	100	120	140	160	180	192	200	Fiyat (USD)
FSE100-80-160/11T	11	160	17	H(m)	26	25	23	22	20	17	14	11		
FSE100-80-160/15T	15	160	24		35	33	31	29	27	24	21	20	18	
FSE100-80-160/18.5T	18.5	160	30		38	37	36	35	33	30	27	25	22	
FSE100-80-200/22T	22	160	35		46	44	42	40	38	35	31	29	26	
FSE100-80-200/30T	30	160	47		57	56	55	53	50	47	44	42	39	
FSE100-80-200/37T	37	160	56		66	65	63	61	59	56	53	51	48	